

## Type No. 410-021-011/111a



MEGA-Line  
RACING ELECTRONIC GmbH  
Haunersdorfer Str.3  
D - 93342 Saal a.d. Donau

Germany

Phone: +49 (0) 9441 6866 - 0

Fax: +49 (0) 9441 6866 - 11

Mail: [info@mega-line.com](mailto:info@mega-line.com)

Web: [www.mega-line.com](http://www.mega-line.com)

### Description / features

The shift paddles represent the human-mechanical interface for the AGS and are mounted on the steering wheel.

The right-hand paddle will initialize an Up-Shift; the left-hand paddle a Down-Shift.

The paddle movement is detected by a normally open contact switch.

### Technical specifications

#### Electronic data:

Operating voltage

13.5V nom.

Output

normally open contact

#### Mechanical data:

Dimensions L x W x H

approx. 53.5 x 50 x 27 mm

Weight (pc)

approx. 55 g

Cable type

44A0111-22

length

approx. 20 cm

wire cross section

AWG 22

Mounting

2 x M5, flat surface required

Versions

left/right; with different paddle directions

Degree of protection

IP67

#### Connector:

none

#### Temperature range:

Ambient (min/max)

-25° to + 85°C

#### Ordering information:

Article no.: left

410-021-011a

right

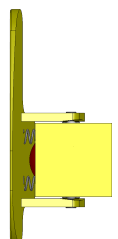
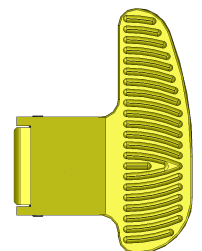
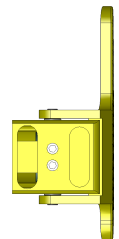
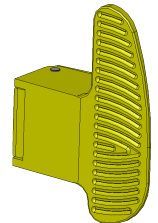
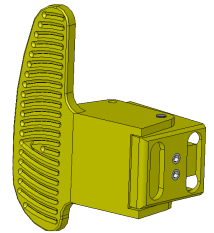
410-021-111a

Order no.: left

6086

right

6087



# SHIFT PADDLE »COMPACT EDITION«

Type No. 410-021-011/111a



MEGA-Line  
RACING ELECTRONIC GmbH  
Haunersdorfer Str.3  
D - 93342 Saal a.d. Donau

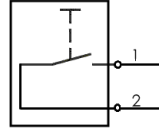
Germany

Phone: +49 (0) 9441 6866 - 0  
Fax: +49 (0) 9441 6866 - 11

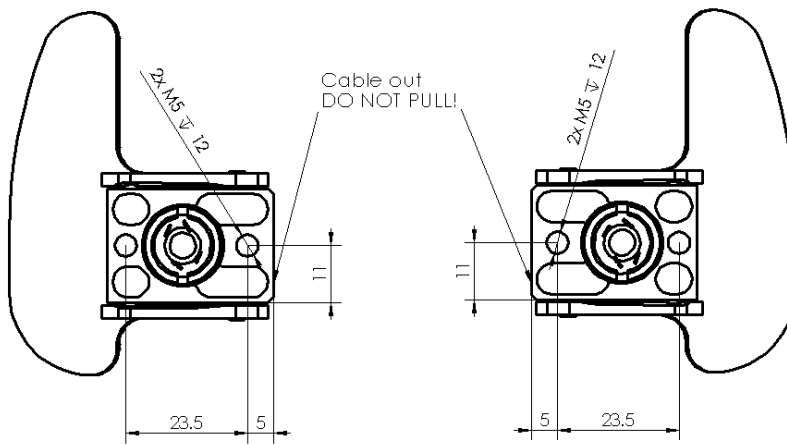
Mail: info@mega-line.com  
Web: www.mega-line.com

## Wiring description

Wire	Function	Dia [AWG]	Color
1	+12V electronic	22	white
2	Signal	22	white



## Assembly dimensions



## Mechanical dimensions

